

# HDP 340 High Pressure Pump series



## Design criteria

Hammelmann high pressure pumps are built to operate at the continuous maximum duty stated in the performance parameters. Just compare the crankshaft speed, average plunger speed, plunger diameter and power rating.

## High pressure pump

Weight: approx. 1070 kg

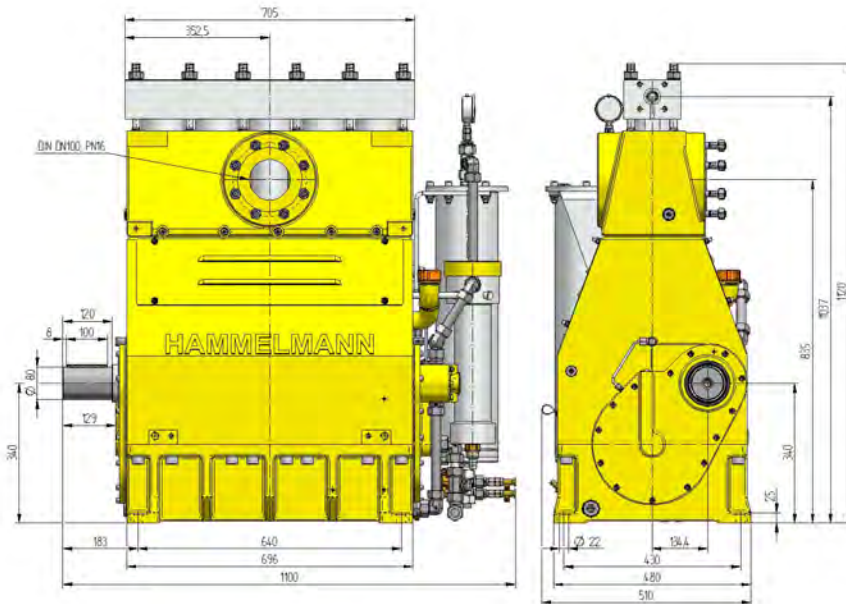


## Features

- Power ratings up to 340 kW
- Vertical 5 cylinder design
- Wide variety of complementary ancillaries

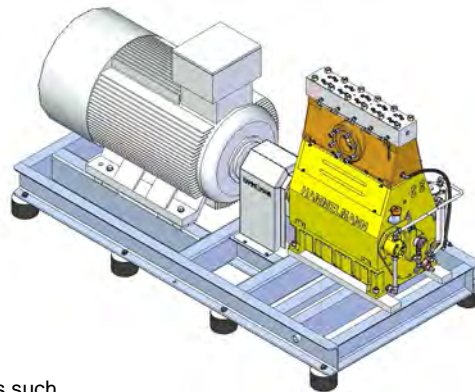
## Quality and reliability

- Crank section calculation by 'Finite element method' ensures long working life under continuous load
- Stainless steel pump head free of alternating stress
- Integral speed reduction gear
- Pressurised oil lubrication system with oil cooler/filter
- Bellows form hermetic seal between the suction chamber and crank section
- Solid ceramic or tungsten carbide plungers
- Choice of application specific seal assemblies
- Choice of bronze (standard) or stainless steel suction chamber



## Stationary unit with electric motor

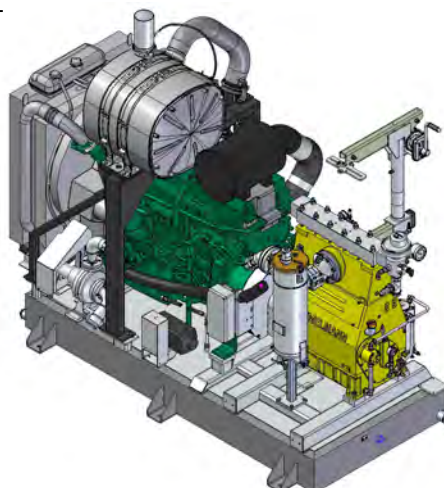
Length: 2900 mm  
Width: 1290 mm  
Height: 1750 mm  
Weight: approx. 3800 kg at 340 kW



Main dimensions without accessories such as suction line, pressure regulator etc. All shown as right-side drive. Detailed dimensional drawings and weights available on request.

## Stationary unit with diesel engine

Length: 3060 mm  
Width: 1570 mm  
Height: 2600 mm  
Weight: approx. 4500 kg with full fuel tank



# Technical data, series HDP 340

## Performance parameters (Standard design)

Note: Actual flow rates for water as pumped medium (volumetric efficiency has already been taken into account).

HDP	Q [l/min]	Required power rating [kW]						D	r. p. m.	
		110	132	200	250	300	340		n 1	n 2
		Operating pressure [bar]								
344	27,2/24,2*	2300*	2800*	4200*	4500*			15	1500	411
	33,0/29,1*	1920	2300*	3500*	4400*	4500*	1500/1800		493	
	39,0/35,0*	1600	1920	2900*	3600*	4400*	1800/2150		591	
	37/33*	1700	2000*	3100*			17,5		1500	411
	44/40*	1410	1700	2600*	3200*			1500/1800	493	
	53/47*	1180	1410	2100	2700*	3200*		1800/2150	591	
	45/40*	1400	1670	2500*	3000*		19,3	1500	411	
	54/48*	1160	1400	2100*	2600*	3000*		1500/1800	493	
	65/58*	970	1160	1760	2200*	2600*		1800/2150	591	
	48/43*	1300	1550	2400*	2800*		20	1500	411	
	58/51*	1080	1300	1960	2500*	2800*		1500/1800	493	
	70/61*	900	1080	1640	2100*	2500*		1800/2150	591	
					2800*					
343	72	830	1000	1510	1800		25	1500	411	
	86	700	830	1260	1570	1800		1500/1800	493	
	103	580	700	1050	1310	1570		1800/2150	591	
	89	660	800	1200	1430		28	1500	411	
	107	550	660	1000	1250	1430		1500/1800	493	
	128	460	550	840	1040	1250		1800/2150	591	
342	101	580	700	1050	1240		30	1500	411	
	122	480	580	870	1100	1240		1500/1800	493	
	146	400	480	730	910	1100		1800/2150	591	
	127	480	570	860	1030		33	1500	411	
	152	400	480	720	900	1030		1500/1800	493	
	182	330	400	600	750	900		1800/2150	591	
	139	420	510	770	910		35	1500	411	
	167	350	420	640	800	910		1500/1800	493	
	200	300	350	530	670	800		1800/2150	591	
	184	320	400	600	700		40	1500	411	
	221	270	320	500	610	700		1500/1800	493	
	265	230	270	410	510	610		1800/2150	591	
	235	260	310	470	550		45	1500	411	
	282	210	260	400	480	550		1500/1800	493	
	338	180	210	320	400	500		1800/2150	591	
	294	210	250	380	450		50	1500	411	
	352	170	210	310	400	450		1500/1800	493	
	422	140	170	260	330	400		1800/2150	591	
	355	170	210	310	370		55	1500	411	
	426	140	170	260	320	370		1500/1800	493	
	511	120	140	220	270	320		1800/2150	591	
	418	140	170	260	310		60	1500	411	
	502	120	140	220	270	310		1500/1800	493	
	602	100	120	180	230	270		1800/2150	591	
491	120	150	220	270		65	1500	411		
589	100	120	200	230	270		1500/1800	493		
706	100	100	160	200	230		1800/2150	591		
569	110	130	200	230		70	1500	411		
683	100	110	160	200	230		1500/1800	493		
819	70	100	130	170	200		1800/2150	591		
744	80	100	150	180		80	1500	411		
892	70	80	120	150	180		1500/1800	493		
1069	60	70	100	130	150		1800/2150	591		

\* Ultra high pressure

- Rod force: 88 kN
- Stroke: 75 mm
- Mean piston speed at n<sub>2</sub>  
411 r.p.m. = 1,02 m/sec  
493 r.p.m. = 1,23 m/sec  
591 r.p.m. = 1,48 m/sec

Typical high-pressure pump units



- Stationary diesel unit in BDF-Container with workshop



- Stationary electric unit



- Electric unit in container



Hammelmann plunger pumps convert 93 to 98 % of the shaft power to hydraulic energy.

D = Piston/Plunger dia. [mm]  
n1 = Motor/Engine r.p.m.  
n2 = Crankshaft



Calder Ltd  
Prescott Drive  
Worcester  
WR4 9NE  
United Kingdom

+44 1905 751790  
sales@calder.co.uk  
www.calderltd.com

**HAMMELMANN**<sup>®</sup>